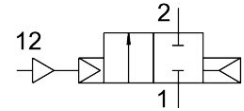


# Pneumatic valve VLX-2-1/4-MS

Part number: 34432

FESTO



[PDF](#) General operating condition

## Data sheet

Feature	Value
Design	Diaphragm valve
Type of actuation	Pneumatic
Sealing principle	Soft
Mounting position	Any
Type of mounting	Inline installation
Connection Process valve	G1/4
Nominal size	13 mm
Valve function	2/2-way, single solenoid, closed
Flow direction	Non-reversible
Medium pressure	1 bar ... 10 bar
Exhaust-air function	Cannot be throttled
Type of reset	Pneumatic spring
Type of piloting	Piloted
Pilot medium	Compressed air to ISO 8573-1:2010 [7:-:-]
Symbol	00991371
Medium	Filtered compressed air, grade of filtration 200 µm
Media temperature	-10 °C ... 80 °C
Ambient temperature	-10 °C ... 60 °C
Standard nominal flow rate (standardised to DIN 1343)	2400 l/min
LABS (PWIS) conformity	VDMA24364-B1/B2-L
Material housing	Brass
Material screws	High-alloy stainless steel
Material number screw	1,4301
Product weight	490 g