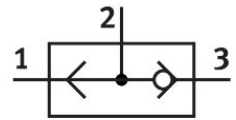


# OR gate OS-1/2

Part number: 3427

FESTO



[PDF](#) General operating condition

## Data sheet

Feature	Value
Valve function	OR function
Pneumatic connection, port 1	G1/2
Pneumatic connection, port 2	G1/2
Type of mounting	With through-hole
Standard nominal flow rate (standardised to DIN 1343)	5000 l/min
Operating pressure	1 bar ... 10 bar
Ambient temperature	-10 °C ... 60 °C
Operating medium	Compressed air to ISO 8573-1:2010 [7:-:-]
Nominal size	12 mm
Symbol	00991517
Note on operating and pilot medium	Lubricated operation possible (in which case lubricated operation will always be required)
LABS (PWIS) conformity	VDMA24364-B1/B2-L
Media temperature	-10 °C ... 60 °C
Pneumatic connection, port 3	G1/2
Note on materials	RoHS compliant