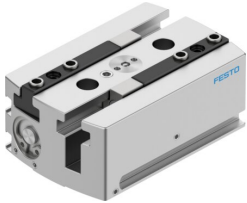


# Parallel gripper HGPL-14-20-A-B

Part number: 3361479

FESTO



[PDF](#) General operating condition

## Data sheet

Feature	Value
Size	14
Stroke per gripper jaws	20 mm
Max. replacement accuracy	<0.2 mm
Max. angular gripper jaw backlash ax, ay	<0.2 deg
Max. gripper jaw backlash Sz	<0.05 mm
Rotationally symmetrical	≤0.2 mm
Repetition accuracy, gripper	<0.03 mm
Number of gripper jaws	2
Drive system	Pneumatic
Mounting position	Any
Mode of operation	Double-acting
Gripper function	Parallel
Gripper force back-up	None
Design	Double piston Guidance Piston gate valve T-shape Rack and pinion
Position detection	Via proximity switch
Symbol	00991894
Operating pressure	3 bar ... 8 bar
Max. operating frequency of gripper	<1 Hz
Min. opening time at 0.6 MPa (6 bar, 87 psi)	120 ms
Min. closing time at 0.6 MPa (6 bar, 87 psi)	110 ms
Max. mass per external gripper finger	80 g
Operating medium	Compressed air to ISO 8573-1:2010 [7:4:4]
Note on operating and pilot medium	Lubricated operation possible (in which case lubricated operation will always be required)
Corrosion resistance class CRC	2 - Moderate corrosion stress
LABS (PWIS) conformity	VDMA24364-B1/B2-L
Ambient temperature	5 °C ... 60 °C
Total gripping force, opening, 0.6MPa (6bar, 87 psi)	126 N
Total gripping force, closing, 0.6MPa (6bar, 87 psi)	158 N
Gripper force per gripper jaw, opening, 0.6 MPa (6 bar, 87 psi)	63 N
Gripper force per gripper jaw, closing, 0.6 MPa (6 bar, 87 psi)	79 N
Mass moment of inertia	1.4 kgcm <sup>2</sup>

Feature	Value
Max. force on gripper jaw Fz static	500 N
Max. torque at gripper Mx static	35 Nm
Max. torque at gripper My static	35 Nm
Max. torque at gripper Mz static	35 Nm
Lubrication interval for guide components	5 MioCyc
Product weight	305 g
Type of mounting	Via female thread and centring sleeve Via through-hole and centring sleeve
Pneumatic connection	M5
Note on materials	RoHS compliant
Material housing	Smooth-anodised wrought aluminium alloy
Material gripper jaws	Hardened steel