



English ▼



S202M-D1

[Print to PDF](#)

[Buy now](#)

General Information

Extended Product Type:

S202M-D1

Product ID:

2CDS272001R0011

EAN:

4016779600361

Catalog Description:

Miniature Circuit Breaker - S200M - 2P - 1 A - D

Long Description:

System pro M compact S200M miniature circuit breakers are current limiting. They have two different tripping mechanisms, the delayed thermal tripping mechanism for overload protection and the electromechanic tripping mechanism for short circuit protection. They are available in different characteris... [Show more](#)

[Add to Cart](#)

[Read More](#)

Data Sheet

Downloads

Buy now

Categories

Related Links

Related Products

Go To Section:

ABB EcoSolutions
 Electrical
 Technical UL/CSA
 Environmental
 Ordering
 Installation
 External Classifications and Standards

Technical
 Design
 Material Compliance
 Dimensions
 Certificates and Declarations
 Popular Downloads
 Accessories

ABB EcoSolutions**ABB EcoSolutions:**

Yes

EcoSolutions Profile:

[Ecosolutions Product Profile_S200M MCB](#)

Recyclability Rate of the Product acc. to EN45555:

Design for Closing Resource Loops - Standard EN45555 - 90.6 %

Extended Product Lifetime:

Product Durability

Offered with Takeback Services:

Take Back for Recycling

End Of Life Disassembling Instructions:

[End of life instruction S200, S200L, SZ200, SC200, S200M](#)

Environmental Product Declaration - EPD:

[EPD S200M, MCB 10kA, 0.5 to 63A](#)

Technical**Dielectric Test Voltage:**

50/60 Hz-1 min: 2 kV

Rated Ultimate Short-Circuit Breaking Capacity (I_{cu}):

(230 V AC) 25 kA
 (400 V AC) 15 kA
 (440 V AC) 15 kA
 (230 V) 25 kA
 (400 V) 15 kA

Rated Service Short-Circuit Breaking Capacity (I_{cs}):

(230 V AC) 7.5 kA

Power Supply Connection:

Arbitrary

Contact Position Indication:

Red ON / Green OFF

Energy Limiting Class:

3

Electrical Endurance:

20000 AC cycle

Mechanical Endurance:

20000 cycle

Number of Protected Poles:

2

Number of Poles:

2P

Tightening Torque:

2.8 N·m

Screw Terminal Type:

Failsafe Bi-directional Cylinder-lift Terminal

Actuator Marking:

I / O

Actuator Material:

Insulation Group II, Black, Sealable

Recommended Screw Driver:

Pozidriv 2

Accessories Available:

Yes

Connecting Capacity:

Busbar 10 / 10 mm²

Flexible with Ferrule 0.75 ... 25 mm²

Flexible 0.75 ... 25 mm²

Flexible 0.75 ... 25 mm²

Rigid 0.75 ... 35 mm²

Rigid 0.75 ... 35 mm²

Stranded 0.75 ... 35 mm²

Installation Size:

acc. to DIN 43880 1

Terminal Type:

Screw Terminals

Electrical

Tripping Characteristic:

D

Rated Operational Voltage:

acc. to IEC 60898-1 400 V AC

acc. to IEC 60898-1 400 V

acc. to IEC 60947-2 440 V AC

Operational Voltage:

Maximum (Incl. Tolerance) 125 V DC

Maximum (Incl. Tolerance) 440 V AC

Minimum 12 V AC

Minimum 12 V DC

Rated Insulation Voltage (U_i):

acc. to IEC/EN 60664-1 440 V

Rated Impulse Withstand Voltage (U_{imp}):

4 kV

at 2000 m 5 kV

at Sea Level 6.2 kV

Input Voltage Type:

AC/DC

Rated Current (I_n):

1 A

Rated Short-Circuit Capacity:

(AC) 10 kA
(230 V AC) 10 kA
(400 V AC) 10 kA
(400 V) 10 kA

Rated Conditional Short-Circuit Current (I_{nc}):

(230 V) 15 kA
(400 V) 25 kA

Rated Frequency (f):

50 / 60 Hz

Power Loss:

2.5 W
at Rated Operating Conditions per Pole 1.25 W

Overvoltage Category:

III

Design

Housing Material:

Insulation Group II, RAL 7035

Technical UL/CSA

Maximum Operating Voltage UL/CSA:

125 V DC
480Y/277 V AC

Interrupting Rating acc. to UL1077:

(125 V DC) 10 kA
(277 V AC) 6 kA
(480Y / 277 V AC) 6 kA

Connecting Capacity UL/CSA:

Busbar 14-8 AWG
Conductor 14-4 AWG

Tightening Torque UL/CSA:

18 in·lb

Material Compliance

RoHS Information:

[RoHS declaration of conformity - S200L, S200, S200M](#)

RoHS Status:

Following EU Directive 2011/65/EU and Amendment 2015/863 July 22, 2019

RoHS Date:

20161001

REACH Declaration:

[Declaration regarding the REACH-Regulation](#)

REACH Information:

True - contains substances > 0.1 mass percentage

REACH Date:

20240821

Conflict Minerals Reporting Template (CMRT):

[Conflict Minerals Reporting Template](#)

SCIP:

9008497a-14f6-4cfd-83c5-11cf3bc660d1 Germany

WEEE Category:

5. Small Equipment (No External Dimension More Than 50 cm)

WEEE B2C / B2B:

Business To Business

Environmental**Ambient Air Temperature:**

Operation -25 ... +55 °C

Storage -40 ... +70 °C

Reference Ambient Air Temperature:

30 °C

Degree of Protection:

IP20

IP40

Enclosure with Cover IP40

Pollution Degree:

3

Environmental Conditions:

28 cycles

with 55 °C / 90-96 %

and 25 °C / 95-100 %

Resistance to Vibrations:

20 Cycles with Load 0.8 In: 5g 5 ... 150 ... 5 Hz

Resistance to Shock acc. to IEC 60068-2-27:

25g 2 shocks 13 ms

Dimensions**Width in Number of Modular Spacings:**

2.0

Product Net Width:

35 mm

Product Net Height:

88 mm

Product Net Depth / Length:

69 mm

Product Net Weight:

0.25 kg

Pole Net Weight:

0.125 kg

Built-In Depth (t₂):

69 mm

Dimension Diagram:

[Dimensioned drawing S200, S200L, S200M](#)

 diagram

Ordering**Package Level 1 Units:**

carton 5 piece

Package Level 1 Gross Weight:

1.3 kg

E-Number (Norway):

1634052

Certificates and Declarations**Declaration of Conformity - CE:**[EU Declaration of Conformity S200L, S200, S200M](#)**Declaration of Conformity - UKCA:**[UKCA Declaration of Conformity - S200, S200M](#)**I^t Characteristic:**[S200_S200M_S200P let-through energy D-K](#)**Installation****Instructions and Manuals:**[S200, S300 instruction manual](#)**Mounting on DIN Rail:**

TH35-15 (35 x 15 mm Mounting Rail) acc. to IEC 60715

TH35-7.5 (35 x 7.5 mm Mounting Rail) acc. to IEC 60715

Mounting Position:

any

Popular Downloads**Data Sheet, Technical Information:**[9AKK107046A0423](#)**I^t Characteristic:**[S200_S200M_S200P let-through energy D-K](#)**External Classifications and Standards****ETIM 9:**

EC000042 - Miniature circuit breaker (MCB)

UNSPSC:

39121603

eClass:

V11.0 : 27141901

IDEA Granular Category Code (IGCC):

4897 >> Miniature circuit breakers

Object Classification Code:

F

Standards:

IEC/EN 60898-1

CSA 22.2 No. 235

IEC/EN 60947-2

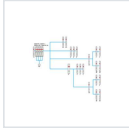
UL 1077

Certification Agency:

EN

IEC

Accessories



[Clear all](#)

[Show all filters \(37\)](#)

[Number of Auxiliary Contacts CO \(SPDT\)](#) 10

[Number of Auxiliary Contacts NC](#) 10

[Number of Auxiliary Contacts NO](#) 10

29 Products

Identifier	Description	Type	Qty	Unit Of Measure	Actions
2CDS200922R0001	Signal/Auxiliary Contact	S2C-S/H6R	1	piece	
2CDS200912R0001	Auxiliary Contact	S2C-H6R	1	piece	
2CDS200970R0031	Auxiliary Contact	S2C-H01	1	piece	
2CDS200970R0032	Auxiliary Contact	S2C-H10	1	piece	
2CDS200936R0001	Auxiliary Contact	S2C-H11L	1	piece	

[1](#) [2](#) [3](#) [4](#) [5](#) ... [6](#)



PRODUCTS

- Offerings A-Z
- Services
- Where to buy

INDUSTRY SOLUTIONS

- Channel partners
- Buildings and infrastructure
- Industrial automation
- Marine
- Oil & gas
- Power generation

INVESTORS

- Investor & shareholder resources
- Quarterly results & annual reports
- Corporate governance
- Calendar, events and publications

COMPANY

- Customer events
- News & media
- Who we are
- Innovation
- Careers
- Sustainability
- Our values
- Supplying



[Provider information](#)

[Privacy Notice](#)

[Cookie settings](#)

© 1995 - 2025