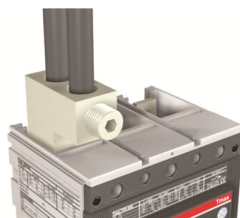




PRODUCT-DETAILS

KIT FC CuAl 2x120mm2 T5 400 8pcs**KIT FC CuAl 2x120mm2 T5 400 8pcs****General Information**

Extended Product Type	KIT FC CuAl 2x120mm2 T5 400 8pcs
Product ID	1SDA055027R1
EAN	8015644561727
Catalog Description	KIT FC CuAl 2x120mm2 T5 400 8pcs
Long Description	FRONT TERMINALS FOR CABLES IN COPPER-ALUMINIUM 2x120mm2 8pcs T5 400

ABB EcoSolutions

Environmental Product Declaration - EPD	No declaration needed
---	-----------------------

Material Compliance

REACH Declaration	9AKK108466A1425
RoHS Information	9AKK108466A1424
RoHS Status	Following EU Directive 2011/65/EU and Amendment 2015/863 July 22, 2019
Conflict Minerals	9AKK108467A5658

Reporting Template
(CMRT)

Toxic Substances Control Act - TSCA	9AKK108467A8326
--	-----------------

Environmental

Environmental Information	9AKK108467A6707
------------------------------	-----------------

Ordering

EAN	8015644561727
Minimum Order Quantity	1 piece
Customs Tariff Number	85389099

Dimensions

Product Net Weight	1.7 kg
--------------------	--------

Container Information

Package Level 1 Units	1 piece
Package Level 1 Gross Weight	1.867 kg
Package Level 1 EAN	8015644561727

Additional Information

Product Main Type	Accessories for Tmax T
Product Name	Accessory
Product Type	Accessory
Suitable For	T5
Suitable for Product Class	SACE Tmax T

Technical

Configuration Type	Loose or configurable
Number of Poles	4P
Standards	IEC

Certificates and Declarations

Data Sheet, Technical Information	1SDC210015D0208 1SDC210300D0201
Declaration of Conformity - CE	Refer to the EU Declaration of the relative Circuit Breaker
Instructions and Manuals	1SDH001408R0001

External Classifications and Standards

ETIM 8	EC002019 - Connection vane/phase spreader
ETIM 9	EC002019 - Connection vane/phase spreader
Object Classification Code	Q
UNSPSC	39121100
WEEE Category	5. Small Equipment (No External Dimension More Than 50 cm)
eClass	V11.1 : 27371305

Categories

Low Voltage Products and Systems → Circuit Breakers → Moulded Case Circuit Breakers → Accessories for Tmax T

