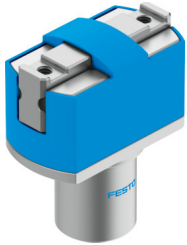


Parallel gripper HGPM-12-EZ-G8

Part number: 197569

FESTO



 [General operating condition](#)

Data sheet

Feature	Value
Size	12
Stroke per gripper jaws	3 mm
Max. replacement accuracy	0.2 mm
Max. angular gripper jaw backlash ax, ay	<0.5 deg
Max. gripper jaw backlash Sz	<0.03 mm
Rotationally symmetrical	0.15 mm
Repetition accuracy, gripper	≤0.05 mm
Number of gripper jaws	2
Drive system	Pneumatic
Mode of operation	Single-acting Closed
Gripper function	Parallel
Gripper force back-up	None
Design	Wedge-shaped drive
Position detection	None
Symbol	00991898
Operating pressure	4 bar ... 8 bar
Max. operating frequency of gripper	4 Hz
Min. opening time at 0.6 MPa (6 bar, 87 psi)	3 ms
Min. closing time at 0.6 MPa (6 bar, 87 psi)	8.3 ms
Max. mass per external gripper finger	15 g
Operating medium	Compressed air to ISO 8573-1:2010 [7:4:4]
Note on operating and pilot medium	Lubricated operation possible (in which case lubricated operation will always be required)
Corrosion resistance class CRC	1 - Low corrosion stress
LABS (PWIS) conformity	VDMA24364-B2-L
Ambient temperature	5 °C ... 60 °C
Total gripping force, closing, 0.6MPa (6bar, 87 psi)	35 N
Gripper force per gripper jaw, opening, 0.6 MPa (6 bar, 87 psi)	17.5 N
Mass moment of inertia	0.04252 kgcm ²
Max. force on gripper jaw Fz static	30 N
Max. torque at gripper Mx static	0.5 Nm
Max. torque at gripper My static	0.5 Nm
Max. torque at gripper Mz static	0.5 Nm
Product weight	41 g
Type of mounting	Clamped

Feature	Value
Pneumatic connection	M3
Note on materials	RoHS compliant
Material cover cap	POM
Material housing	Anodised wrought aluminium alloy
Material gripper jaws	High-alloy steel