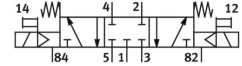


Solenoid valve MFH-5/3G-3/8-B

Part number: 19707

FESTO



 [General operating condition](#)

Data sheet

Feature	Value
Valve function	5/3-way, closed
Type of actuation	Electrical
Construction width	40 mm
Standard nominal flow rate (standardised to DIN 1343)	2200 l/min
pneumatic working port	G3/8
Operating pressure	0.3 MPa ... 1 MPa
Operating pressure	3 bar ... 10 bar
Design	Piston gate valve
Type of reset	Mechanical spring
Nominal size	12 mm
Grid dimension	41 mm
Exhaust-air function	Can be throttled
Sealing principle	Soft
Mounting position	Any
Manual override	Non-detenting
Type of piloting	Piloted
Pilot air supply	Internal
Flow direction	Non-reversible
Symbol	00991033
lap	Overlap
Max. switching frequency	3 Hz
Switching time off	80 ms
Switching time on	24 ms
Max. positive test pulse with 0 signal	2200 µs
Max. negative test pulse with 1 signal	3700 µs
Operating medium	Compressed air to ISO 8573-1:2010 [7:4:4]
Note on operating and pilot medium	Lubricated operation possible (in which case lubricated operation will always be required)
Corrosion resistance class CRC	1 - Low corrosion stress
LABS (PWIS) conformity	VDMA24364-B1/B2-L
Storage temperature	-40 °C ... 60 °C
Media temperature	-10 °C ... 60 °C
Ambient temperature	-5 °C ... 40 °C
Product weight	780 g
Electrical connection	Via F coil, to be ordered separately

Feature	Value
Type of mounting	On PR rail With through-hole
Pilot exhaust port 82	M5
Pilot exhaust port 84	M5
Pneumatic connection, port 1	G3/8
Pneumatic connection, port 2	G3/8
Pneumatic connection, port 3	G3/8
Pneumatic connection, port 4	G3/8
Pneumatic connection, port 5	G3/8
Note on materials	RoHS compliant
Material seals	NBR
Material housing	Die-cast aluminium