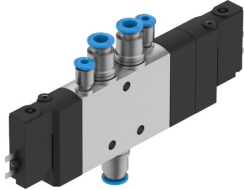


Solenoid valve CPE14-M1BH-5/3BS-QS-6

Part number: 196897

FESTO



 [General operating condition](#)

Data sheet

| Feature | Value |
|---|--|
| Valve function | 5/3-way, pressurised |
| Type of actuation | Electrical |
| Construction width | 14 mm |
| Standard nominal flow rate (standardised to DIN 1343) | 370 l/min |
| pneumatic working port | QS-6 |
| Operating voltage | 24 V DC |
| Operating pressure | -0.09 MPa ... 1 MPa |
| Operating pressure | -0.9 bar ... 10 bar |
| Design | Piston gate valve |
| Type of reset | Mechanical spring |
| Approval | c UL us - Recognised (Oil) |
| Maritime classification | See certificate |
| Certificate issuing authority | DNV-TAA000032X UL MH19482 |
| Degree of protection | IP65 With plug socket To IEC 60529 |
| Nominal size | 6 mm |
| Exhaust-air function | Can be throttled |
| Sealing principle | Soft |
| Mounting position | Any |
| Manual override | Detenting via accessory Non-detenting |
| Type of piloting | Piloted |
| Pilot air supply | External |
| Flow direction | Reversible |
| Symbol | 00991031 |
| Valve position code | Label holder |
| lap | Overlap |
| Pilot pressure | 0.3 MPa ... 0.8 MPa |
| Pilot pressure | 3 bar ... 8 bar |
| Switching time off | 42 ms |
| Switching time on | 20 ms |
| Duty cycle | 100% in conjunction with holding current reduction |
| Max. positive test pulse with 0 signal | 1200 µs |
| Max. negative test pulse with 1 signal | 900 µs |
| Characteristic coil data | 24 V DC: 1.28 W |

| Feature | Value |
|------------------------------------|--|
| Permissible voltage fluctuations | -15% / +10% |
| Operating medium | Compressed air to ISO 8573-1:2010 [7:4:4] |
| Note on operating and pilot medium | Lubricated operation possible (in which case lubricated operation will always be required) |
| Vibration resistance | Transport application test with severity level 2 to FN 942017-4 and EN 60068-2-6 |
| Shock resistance | Shock test with severity level 2 to FN 942017-5 and EN 60068-2-27 |
| Corrosion resistance class CRC | 2 - Moderate corrosion stress |
| LABS (PWIS) conformity | VDMA24364-B1/B2-L |
| Media temperature | -5 °C ... 50 °C |
| Pilot medium | Compressed air to ISO 8573-1:2010 [7:4:4] |
| Ambient temperature | -5 °C ... 50 °C |
| Electrical connection | 2-pin |
| Type of mounting | With through-hole |
| Pilot exhaust port 82 | M3 |
| Pilot exhaust port 84 | M3 |
| Pilot air port 12 | M3 |
| Pilot air port 14 | M3 |
| Pneumatic connection, port 1 | QS-6 |
| Pneumatic connection, port 2 | QS-6 |
| Pneumatic connection, port 3 | G1/8 |
| Pneumatic connection, port 4 | QS-6 |
| Pneumatic connection, port 5 | G1/8 |
| Note on materials | RoHS compliant |
| Material seals | NBR |
| Material housing | Die-cast aluminium |