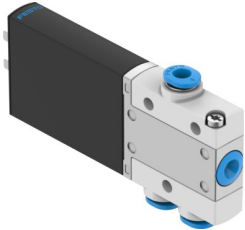


Solenoid valve MHE2-M1H-3/2G-QS-4

Part number: 196134

FESTO



[General operating condition](#)

Data sheet

| Feature | Value |
|---|--|
| Valve function | 3/2-way, single solenoid, closed |
| Type of actuation | Electrical |
| Construction width | 10 mm |
| Standard nominal flow rate (standardised to DIN 1343) | 100 l/min |
| pneumatic working port | QS-4 |
| Operating voltage | 24 V DC |
| Operating pressure | -0.09 MPa ... 0.8 MPa |
| Operating pressure | -0.9 bar ... 8 bar |
| Operating pressure | -13.05 psi ... 116 psi |
| Design | Pressure relief poppet valve |
| Type of reset | Mechanical spring |
| Degree of protection | IP65 |
| Approval | c UL us - Recognised (Oil) |
| Nominal size | 2 mm |
| Grid dimension | 14 mm |
| Note on grid dimension | Minimum distance between the valves is 4 mm |
| Exhaust-air function | Can be throttled |
| Sealing principle | Soft |
| Mounting position | Any |
| Manual override | Non-detenting |
| Type of piloting | Direct |
| Flow direction | Reversible with restrictions |
| Symbol | 00991308 |
| lap | Underlap |
| Operating pressure, reversible | -0.09 MPa ... 0.1 MPa |
| Operating pressure, reversible | -0.9 bar ... 1 bar |
| Operating pressure, reversible | -13.05 psi ... 14.5 psi |
| Max. switching frequency | 130 Hz |
| Switching time off | 3.5 ms |
| Switching time on | 7 ms |
| Duty cycle | 100% |
| Characteristic coil data | 24 V DC: 2.88 W |
| Permissible voltage fluctuations | +/-10% |
| Operating medium | Compressed air to ISO 8573-1:2010 [7:4:4] |
| Note on operating and pilot medium | Lubricated operation possible (in which case lubricated operation will always be required) |

| Feature | Value |
|---|--|
| Vibration resistance | Transport application test with severity level 2 to FN 942017-4 and EN 60068-2-6 |
| Shock resistance | Shock test with severity level 2 to FN 942017-5 and EN 60068-2-27 |
| Corrosion resistance class CRC | 2 - Moderate corrosion stress |
| LABS (PWIS) conformity | VDMA24364-B1/B2-L |
| Cleanroom suitability, measured according to ISO 14644-14 | Class 6 according to ISO 14644-1 |
| Media temperature | -5 °C ... 60 °C |
| Ambient temperature | -5 °C ... 60 °C |
| Product weight | 60 g |
| Electrical connection | 2-pin Plug |
| Type of mounting | With through-hole |
| Pneumatic connection, port 1 | QS-4 |
| Pneumatic connection, port 2 | QS-4 |
| Pneumatic connection, port 3 | QS-4 |
| Note on materials | RoHS compliant |
| Material seals | HNBR NBR |
| Material housing | Die-cast zinc, coated |
| Material screws | Galvanised steel |