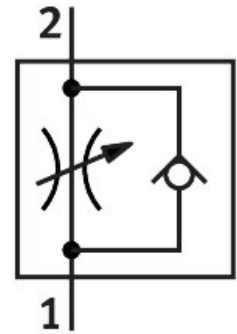


# One-way flow control valve GRLZ-1/8-QS-4-D

Part number: 193157

FESTO



 [General operating condition](#)

## Data sheet

Feature	Value
Valve function	Supply air one-way flow control function
Pneumatic connection, port 1	QS-4
Pneumatic connection, port 2	G1/8
Adjustment component	Slotted head screw
Type of mounting	Screw-in
Standard nominal flow rate in flow control direction	160 l/min
Standard nominal flow rate in blocked direction	120 l/min ... 190 l/min
Ambient temperature	-10 °C ... 60 °C
Maritime classification	See certificate
Mounting position	Any
Symbol	00991453
Operating pressure complete temperature range	0.2 bar ... 10 bar
Standard flow rate in flow control direction 0.6-10 MPa (6-10 bar, 87-10 psi)	300 l/min
Standard flow rate in non-return direction 0.6-10 MPa (6-10 bar, 87-10 psi)	260 l/min ... 290 l/min
Operating medium	Compressed air to ISO 8573-1:2010 [7:4:4]
Note on operating and pilot medium	Lubricated operation possible (in which case lubricated operation will always be required)
LABS (PWIS) conformity	VDMA24364-B1/B2-L
Cleanroom suitability, measured according to ISO 14644-14	Class 4 according to ISO 14644-1
Media temperature	-10 °C ... 60 °C
Nominal torque	3 Nm
Tolerance for nominal tightening torque	±10%
Product weight	22 g
Material screwed plug	Wrought aluminium alloy
Note on materials	RoHS compliant
Material seals	NBR
Material release ring	POM
Material adjusting screw	Brass

Feature	Value
Material swivel fitting	Die-cast zinc Chromated