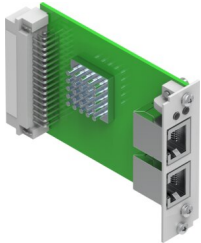


Interface CAMC-F-EP

Part number: 1911917

FESTO



 [General operating condition](#)

Data sheet

| Feature | Value |
|---|--|
| Dimensions (W x L x H) | 19 mm x 90 mm x 65 mm |
| CE mark (see declaration of conformity) | To EU EMC Directive |
| LABS (PWIS) conformity | VDMA24364 zone III |
| Storage temperature | -25 °C ... 70 °C |
| Relative air humidity | 5 - 95% Non-condensing |
| Degree of protection | IP20 In mounted state |
| Ambient temperature | 0 °C ... 50 °C |
| Product weight | 75 g |
| Type of mounting | Plug-in module for CMMP-AS...-M3 |
| Note on materials | RoHS compliant |
| Mounting position | Any |
| Protocol | EtherNet/IP |
| Communication profile | FHPP |
| Baud rate | 10/100 Mbps (full/half) |
| Topologies | Star Ring Line |
| Media redundancy | DLR |
| IP address allocation | FCT DHCP BOOTP DIL switch |
| Field bus interface | 2x RJ45 socket |
| Min. cycle time | 1 ms |
| LED display | Ethernet communication activity Ethernet line monitoring Module status Network status |
| Configuration support | EDS |
| Parameterisation | FCT |
| Additional functions | Integrated switch |