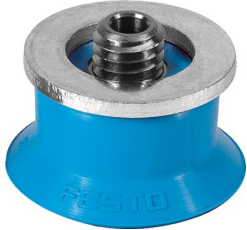


# Suction cup with connection ESS-30-EU

Part number: 189343

FESTO



[PDF](#) General operating condition

## Data sheet

Feature	Value
Min. workpiece radius	50 mm
Nominal size	3 mm
Suction cup diameter	30 mm
Suction cup volume	2.12 cm <sup>3</sup>
Position of connection	On top
Mounting position	Any
Symbol	00991485
Correlation to suction-cup holder	Size 4
Suction cup shape	Round extra deep
Operating pressure	-0.095 MPa ... 0 MPa
Operating pressure	-0.95 bar ... 0 bar
Operating pressure	-13.775 psi ... 0 psi
Nominal operating pressure	-0.07 MPa
Nominal operating pressure	-0.7 bar
Nominal operating pressure	-10.15 psi
Operating medium	Atmospheric air based on ISO 8573-1:2010 [7::-]
Corrosion resistance class CRC	1 - Low corrosion stress
LABS (PWIS) conformity	VDMA24364 zone III
Suitable for use with food	See supplementary material information
Ambient temperature	-20 °C ... 60 °C
Holding force at nominal operating pressure	37.2 N
Lateral force at nominal operating pressure	41.5 N
Product weight	9.2 g
Type of mounting	Via vacuum port
Vacuum connection	M6
Colour	Blue
Shore hardness	60 +/-5
Material screwed plug	Nickel-plated brass Steel, galvanised and chrome-plated
Note on materials	RoHS compliant
Material suction cup	PUR