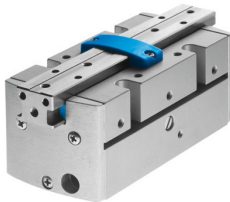


Parallel gripper HGPP-12-A

Part number: 187867

FESTO



[PDF](#) General operating condition

Data sheet

Feature	Value
Size	12
Stroke per gripper jaws	2.5 mm
Max. replacement accuracy	0.1 mm
Max. angular gripper jaw backlash ax, ay	0 deg
Max. gripper jaw backlash Sz	0 mm
Rotationally symmetrical	0.05 mm
Repetition accuracy, gripper	≤0.02 mm
Number of gripper jaws	2
Drive system	Pneumatic
Mode of operation	Double-acting
Gripper function	Parallel
Gripper force back-up	None
Design	Rack and pinion
Position detection	Via Hall sensor For inductive sensors
Symbol	00991894
Operating pressure	2 bar ... 8 bar
Max. operating frequency of gripper	4 Hz
Min. opening time at 0.6 MPa (6 bar, 87 psi)	27 ms
Min. closing time at 0.6 MPa (6 bar, 87 psi)	40 ms
Max. mass per external gripper finger	100 g
Operating medium	Compressed air to ISO 8573-1:2010 [7:4:4]
Note on operating and pilot medium	Lubricated operation possible (in which case lubricated operation will always be required)
Corrosion resistance class CRC	2 - Moderate corrosion stress
LABS (PWIS) conformity	VDMA24364-B2-L
Ambient temperature	5 °C ... 60 °C
Total gripping force, opening, 0.6MPa (6bar, 87 psi)	116 N
Total gripping force, closing, 0.6MPa (6bar, 87 psi)	116 N
Gripper force per gripper jaw, opening, 0.6 MPa (6 bar, 87 psi)	58 N
Gripper force per gripper jaw, closing, 0.6 MPa (6 bar, 87 psi)	58 N
Mass moment of inertia	0.73 kgcm ²
Max. force on gripper jaw Fz static	70 N
Max. torque at gripper Mx static	3 Nm
Max. torque at gripper My static	3 Nm

Feature	Value
Max. torque at gripper Mz static	3 Nm
Product weight	172 g
Type of mounting	With female thread
Pneumatic connection	M3
Note on materials	RoHS compliant
Material cover cap	POM
Material housing	Hard anodised wrought aluminium alloy
Material gripper jaws	Wrought aluminium alloy, nickel-plated