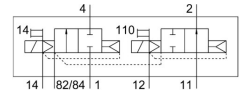
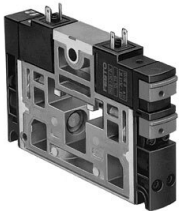


Solenoid valve

CPV18-M1H-2OLS-2GLS-1/4

Part number: 187849

FESTO



[PDF](#) General operating condition

Data sheet

Feature	Value
Valve function	2x2/2-way, open/closed, monostable
Type of actuation	Electrical
Valve size	18 mm
Standard nominal flow rate (standardised to DIN 1343)	1600 l/min
pneumatic working port	G1/4
Operating voltage	24 V DC
Operating pressure	-0.09 MPa ... 1 MPa
Operating pressure	-0.9 bar ... 10 bar
Design	Piston gate valve
Type of reset	Pneumatic spring
Approval	C-Tick
Degree of protection	IP65
Nominal size	8 mm
Exhaust-air function	Cannot be throttled
Sealing principle	Soft
Mounting position	Any
Manual override	Detenting Non-detenting
Type of piloting	Piloted
Pilot air supply	External Internal
Flow direction	Non-reversible
Symbol	00991802
lap	Overlap
Pilot pressure	0.3 MPa ... 0.8 MPa
Pilot pressure	3 bar ... 8 bar
b value	0.41
C value	6.3 l/sbar
Switching time off	20 ms
Switching time on	14 ms
Duty cycle	100%
Electrical power consumption	1.5 W
Operating medium	Compressed air to ISO 8573-1:2010 [7:4:4]
Note on operating and pilot medium	Lubricated operation possible (in which case lubricated operation will always be required)
Corrosion resistance class CRC	2 - Moderate corrosion stress

Feature	Value
LABS (PWIS) conformity	VDMA24364-B1/B2-L
Storage temperature	-20 °C ... 40 °C
Media temperature	-5 °C ... 50 °C
Ambient temperature	-5 °C ... 50 °C
Product weight	260 g
Type of mounting	With through-hole
Pilot air port 12/14	Common line
Pilot exhaust port 82/84	Common line
Pneumatic connection, port 1	Common line
Pneumatic connection, port 11	Common line
Pneumatic connection, port 2	G1/4
Pneumatic connection 3/5 combined	Common line
Pneumatic connection, port 4	G1/4
Note on materials	RoHS compliant
Material seals	HNBR NBR
Material housing	Die-cast aluminium Brass POM PPS Steel