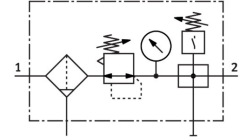


# Service unit combination LFR-1/4-D-MINI-KE

Part number: 185757

FESTO



[PDF](#) [General operating condition](#)

## Data sheet

| Feature   | Value   |
|---|---|
| Size  | Mini  |
| Series  | D   |
| Actuator lock   | Rotary knob with detent   |
| Mounting position                                     | Vertical +/-5°  |
| Grade of filtration                                   | 40 µm   |
| Condensate drain                                      | Manual, rotating  |
| Design  | Branching module<br>Pressure switch<br>Filter regulator with pressure gauge |
| Max. condensate volume                                | 22 ml   |
| Bowl guard  | Metal bowl guard  |
| Symbol  | 00991525  |
| Pressure gauge (ANALOG) or Pressure display (DIGITAL) | With pressure gauge   |
| Operating pressure                                    | 0.1 MPa ... 1.6 MPa   |
| Operating pressure                                    | 1 bar ... 16 bar  |
| Operating pressure                                    | 14.5 psi ... 232 psi  |
| Pressure regulation range                             | 0.05 MPa ... 1.2 MPa  |
| Pressure regulation range                             | 0.5 bar ... 12 bar  |
| Pressure regulation range                             | 7.25 psi ... 174 psi  |
| Max. pressure hysteresis                              | 0.015 MPa   |
| Max. pressure hysteresis                              | 0.15 bar  |
| Max. pressure hysteresis                              | 2.175 psi   |
| Standard nominal flow rate (standardised to DIN 1343) | 1140 l/min  |
| Operating medium                                      | Inert gas   |
| Corrosion resistance class CRC                        | 2 - Moderate corrosion stress   |
| LABS (PWIS) conformity                                | VDMA24364-B1/B2-L   |
| Air purity class at output                            | Compressed air to ISO 8573-1:2010 [7:8:4]<br>Inert gas                      |
| Media temperature                                     | -10 °C ... 60 °C  |
| Ambient temperature                                   | -10 °C ... 60 °C  |
| Product weight  | 1000 g  |
| Type of mounting                                      | With accessories  |
| Pneumatic connection, port 1                          | G1/4  |
| Pneumatic connection, port 2                          | G1/4  |
| Material housing                                      | Die-cast zinc   |
| Material bowl   | Makrolon®   |