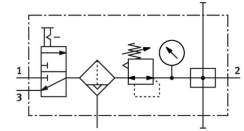


# Service unit combination LFR-1/2-D-MIDI-KB-A

Part number: 185728

FESTO



[PDF](#) General operating condition

## Data sheet

| Feature   | Value  |
|---|--|
| Size  | Midi   |
| Series  | D  |
| Actuator lock   | Rotary knob with detent  |
| Mounting position                                     | Vertical +/-5°   |
| Grade of filtration                                   | 40 µm  |
| Condensate drain                                      | Fully automatic  |
| Design  | Branching module<br>On/off valve<br>Filter regulator with pressure gauge |
| Max. condensate volume                                | 43 ml  |
| Bowl guard  | Metal bowl guard   |
| Symbol  | 00991553   |
| Pressure gauge (ANALOG) or Pressure display (DIGITAL) | With pressure gauge  |
| Operating pressure                                    | 0.2 MPa ... 1.2 MPa  |
| Operating pressure                                    | 2 bar ... 12 bar   |
| Operating pressure                                    | 29 psi ... 174 psi   |
| Pressure regulation range                             | 0.05 MPa ... 1.2 MPa   |
| Pressure regulation range                             | 0.5 bar ... 12 bar   |
| Pressure regulation range                             | 7.25 psi ... 174 psi   |
| Max. pressure hysteresis                              | 0.035 MPa  |
| Max. pressure hysteresis                              | 0.35 bar   |
| Max. pressure hysteresis                              | 5.075 psi  |
| Standard nominal flow rate (standardised to DIN 1343) | 2920 l/min   |
| Operating medium                                      | Inert gas  |
| Corrosion resistance class CRC                        | 2 - Moderate corrosion stress  |
| LABS (PWIS) conformity                                | VDMA24364-B1/B2-L  |
| Air purity class at output                            | Compressed air to ISO 8573-1:2010 [7:8:4]<br>Inert gas                   |
| Media temperature                                     | -10 °C ... 60 °C   |
| Ambient temperature                                   | -10 °C ... 60 °C   |
| Product weight  | 2200 g   |
| Type of mounting                                      | With accessories   |
| Pneumatic connection, port 1                          | G1/2   |
| Pneumatic connection, port 2                          | G1/2   |
| Material housing                                      | Die-cast zinc  |
| Material bowl   | Makrolon®  |