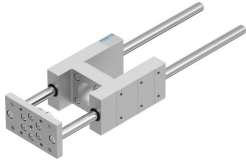



Guide unit EAGF-V2-KF-63-320

Part number: 1725844

FESTO



 General operating condition

Data sheet

Feature	Value
Size	63
Stroke	320 mm
Reversing backlash theoretical	0 µm
Mounting position	Any
Guide	Recirculating ball bearing guide
Design	Guidance
Corrosion resistance class CRC	0 - No corrosion stress
LABS (PWIS) conformity	VDMA24364-B2-L
Ambient temperature	-20 °C ... 80 °C
Max. force Fy	1260 N
Max. force Fy static	1600 N
Max. force Fz	1260 N
Max. force Fz static	1600 N
Max. moment Mx	75 Nm
Max. torque Mx static	95 Nm
Max. moment My	90 Nm
Max. torque My static	115 Nm
Max. moment Mz	90 Nm
Max. torque Mz static	115 Nm
Displacement force	15 N
Moving mass	4131 g
Product weight	7093 g
Centre of gravity at 0 mm stroke	48 mm
Centre of gravity additional of moving mass per 10 mm	4.1 mm
Type of mounting	With female thread
Note on materials	RoHS compliant
Material guide component	Tempered steel
Material housing	anodised
Material yoke plate	Steel