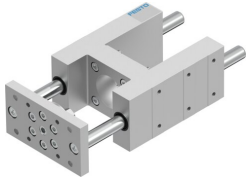


Guide unit EAGF-V2-KF-63-100

Part number: 1725842

FESTO



 General operating condition

Data sheet

Feature	Value
Size	63
Stroke	100 mm
Reversing backlash theoretical	0 µm
Mounting position	Any
Guide	Recirculating ball bearing guide
Design	Guidance
Corrosion resistance class CRC	0 - No corrosion stress
LABS (PWIS) conformity	VDMA24364-B2-L
Ambient temperature	-20 °C ... 80 °C
Max. force F _y	1260 N
Max. force F _y static	1600 N
Max. force F _z	1260 N
Max. force F _z static	1600 N
Max. moment M _x	75 Nm
Max. torque M _x static	95 Nm
Max. moment M _y	90 Nm
Max. torque M _y static	115 Nm
Max. moment M _z	90 Nm
Max. torque M _z static	115 Nm
Displacement force	15 N
Moving mass	3045 g
Product weight	6015 g
Centre of gravity at 0 mm stroke	48 mm
Centre of gravity additional of moving mass per 10 mm	4.1 mm
Type of mounting	With female thread
Note on materials	RoHS compliant
Material guide component	Tempered steel
Material housing	anodised
Material yoke plate	Steel