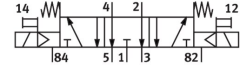


# Solenoid valve CPE18-M3H-5/3E-1/4

Part number: 170321

FESTO



[General operating condition](#)

## Data sheet

| Feature   | Value  |
|---|--|
| Valve function  | 5/3 exhausted  |
| Type of actuation                                     | Electrical   |
| Construction width                                    | 18 mm  |
| Standard nominal flow rate (standardised to DIN 1343) | 1200 l/min   |
| pneumatic working port                                | G1/4   |
| Operating voltage                                     | 230V AC  |
| Operating pressure                                    | 0.25 MPa ... 1 MPa   |
| Operating pressure                                    | 2.5 bar ... 10 bar   |
| Design  | Piston gate valve  |
| Type of reset   | Mechanical spring  |
| Approval  | c UL us - Recognised (Oil)                                     |
| Maritime classification                               | See certificate  |
| CE mark (see declaration of conformity)               | To EU Low Voltage Directive                                    |
| UKCA marking (see declaration of conformity)          | To UK regulations for electrical equipment                     |
| Certificate issuing authority                         | DNV-TAA000032X<br>UL MH19482                                   |
| Degree of protection                                  | IP65<br>With plug socket<br>To IEC 60529                       |
| Nominal size  | 8 mm   |
| Exhaust-air function                                  | Can be throttled   |
| Sealing principle                                     | Soft   |
| Mounting position                                     | Any  |
| Manual override                                       | Detenting via accessory<br>Non-detenting                       |
| Type of piloting                                      | Piloted  |
| Pilot air supply                                      | Internal   |
| Flow direction  | Non-reversible   |
| Symbol  | 00991036   |
| Valve position code                                   | Label holder   |
| lap   | Overlap  |
| Switching time off                                    | 38 ms  |
| Switching time on                                     | 20 ms  |
| Duty cycle  | 100%   |
| Max. positive test pulse with 0 signal                | 3300 µs  |
| Max. negative test pulse with 1 signal                | 3100 µs  |
| Characteristic coil data                              | 230 V AC: 50/60 Hz, pick-up power 3.0 VA, holding power 2.4 VA |

| Feature                            | Value  |
|------------------------------------|--|
| Permissible voltage fluctuations   | -15% / +10%  |
| Operating medium                   | Compressed air to ISO 8573-1:2010 [7:4:4]  |
| Note on operating and pilot medium | Lubricated operation possible (in which case lubricated operation will always be required) |
| Vibration resistance               | Transport application test with severity level 2 to FN 942017-4 and EN 60068-2-6           |
| Shock resistance                   | Shock test with severity level 2 to FN 942017-5 and EN 60068-2-27                          |
| Corrosion resistance class CRC     | 2 - Moderate corrosion stress  |
| LABS (PWIS) conformity             | VDMA24364-B1/B2-L  |
| Media temperature                  | -5 °C ... 50 °C  |
| Ambient temperature                | -5 °C ... 50 °C  |
| Product weight                     | 280 g  |
| Electrical connection              | Type C   |
| Type of mounting                   | With through-hole  |
| Pilot exhaust port 82              | M5   |
| Pilot exhaust port 84              | M5   |
| Pilot air port 12                  | M5   |
| Pilot air port 14                  | M5   |
| Pneumatic connection, port 1       | G1/4   |
| Pneumatic connection, port 2       | G1/4   |
| Pneumatic connection, port 3       | G1/4   |
| Pneumatic connection, port 4       | G1/4   |
| Pneumatic connection, port 5       | G1/4   |
| Note on materials                  | RoHS compliant   |
| Material seals                     | NBR  |
| Material housing                   | Die-cast aluminium   |