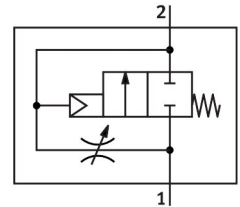


On/off valve HEL-1-D-MAXI

Part number: 165083

FESTO



[PDF](#) General operating condition

Data sheet

Feature	Value
Exhaust-air function	Can be throttled
Type of actuation	Pneumatic
Sealing principle	Soft
Mounting position	Any
Manual override	None
Design	Piston gate valve
Type of reset	Mechanical spring
Type of piloting	Direct
Flow direction	Non-reversible
Symbol	00991513
Valve function	2/2-way, single solenoid, closed
Operating pressure	0.3 MPa ... 1.6 MPa
Operating pressure	3 bar ... 16 bar
b value	0.54
C value	28.3 l/sbar
Standard nominal flow rate (standardised to DIN 1343)	6500 l/min
Operating medium	Compressed air to ISO 8573-1:2010 [7:4:4] Inert gas
Note on operating and pilot medium	Lubricated operation possible (in which case lubricated operation will always be required)
Corrosion resistance class CRC	2 - Moderate corrosion stress
LABS (PWIS) conformity	VDMA24364-B1/B2-L
Air purity class at output	Compressed air to ISO 8573-1:2010 [7:4:4] Inert gas
Media temperature	-10 °C ... 60 °C
Ambient temperature	-10 °C ... 60 °C
Product weight	394 g
Type of mounting	Inline installation
Pneumatic connection, port 1	G1
Pneumatic connection, port 2	G1
Note on materials	RoHS compliant
Material seals	NBR
Material housing	Die-cast aluminium