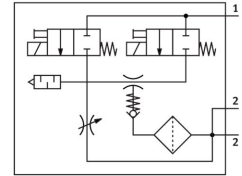


Vacuum generator VADMI-95

Part number: 162508

FESTO



 General operating condition

Data sheet

| Feature | Value |
|--|--|
| Nominal size, Laval nozzle | 0.95 mm |
| Grid dimension | 18 mm |
| Silencer design | Closed |
| Mounting position | Any |
| Ejector characteristic | High vacuum |
| Grade of filtration | ≤40 µm |
| Manual override | Non-detenting |
| Integrated function | Ejector pulse valve, electric Flow control On/off valve, electric Filter Check valve |
| Symbol | 00991305 |
| Valve function | Closed |
| Operating pressure | 0.2 MPa ... 0.8 MPa |
| Operating pressure | 2 bar ... 8 bar |
| Operating pressure | 29 psi ... 116 psi |
| Max. vacuum | 85 % |
| Nominal operating pressure | 0.6 MPa |
| Nominal operating pressure | 6 bar |
| Nominal operating pressure | 87 psi |
| Air supply time at nominal operating pressure with ejector pulse | 2.04 s |
| Operational voltage range DC | 21.6 V ... 26.4 V |
| Duty cycle | 100% |
| Approval | c UL us - Recognised (Oil) |
| Operating medium | Compressed air to ISO 8573-1:2010 [7:4:4] |
| Note on operating and pilot medium | Lubricated operation not possible |
| Corrosion resistance class CRC | 2 - Moderate corrosion stress |
| LABS (PWIS) conformity | VDMA24364-B1/B2-L |
| Media temperature | 0 °C ... 60 °C |
| Degree of protection | IP65 |
| Ambient temperature | 0 °C ... 60 °C |
| Product weight | 240 g |
| Electrical connection | Plug |
| Type of mounting | With through-hole With female thread |

| Feature | Value |
|------------------------------|-------------------------|
| Pneumatic connection, port 1 | G1/8 |
| Pneumatic connection, port 3 | Integrated silencer |
| Vacuum connection | G1/8 |
| Note on materials | RoHS compliant |
| Material seals | NBR |
| Material receiver nozzle | Nickel-plated brass |
| Material filter | Process automation |
| Material filter housing | Makrolon® |
| Material housing | Wrought aluminium alloy |
| Material silencer | Packaging unit POM |
| Material piston | POM |
| Material transmitter nozzle | Nickel-plated brass |