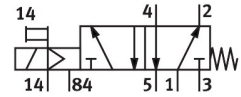


# Solenoid valve MFH-5-1/4-S-B

Part number: 15902

FESTO



[General operating condition](#)

## Data sheet

| Feature   | Value  |
|---|--|
| Valve function  | 5/2-way, single solenoid   |
| Type of actuation                                     | Electrical   |
| Construction width                                    | 32 mm  |
| Standard nominal flow rate (standardised to DIN 1343) | 1300 l/min   |
| pneumatic working port                                | G1/4   |
| Operating pressure                                    | 0 MPa ... 1 MPa  |
| Operating pressure                                    | 0 bar ... 10 bar   |
| Design  | Poppet seat  |
| Type of reset   | Mechanical spring  |
| Nominal size  | 7 mm   |
| Grid dimension  | 33 mm  |
| Exhaust-air function                                  | Can be throttled   |
| Sealing principle                                     | Soft   |
| Mounting position                                     | Any  |
| Manual override                                       | Non-detenting  |
| Type of piloting                                      | Piloted  |
| Pilot air supply                                      | External   |
| Flow direction  | Non-reversible   |
| Symbol  | 00991024   |
| lap   | Underlap   |
| Pilot pressure  | 0.15 MPa ... 0.8 MPa   |
| Pilot pressure  | 1.5 bar ... 8 bar  |
| b value   | 0.29   |
| C value   | 5.5 l/sbar   |
| Max. switching frequency                              | 3 Hz   |
| Switching time off                                    | 36 ms  |
| Switching time on                                     | 12 ms  |
| Max. positive test pulse with 0 signal                | 2200 µs  |
| Max. negative test pulse with 1 signal                | 3700 µs  |
| Operating medium                                      | Compressed air to ISO 8573-1:2010 [7:4:4]  |
| Note on operating and pilot medium                    | Lubricated operation possible (in which case lubricated operation will always be required) |
| Corrosion resistance class CRC                        | 1 - Low corrosion stress   |
| LABS (PWIS) conformity                                | VDMA24364-B1/B2-L  |
| Storage temperature                                   | -40 °C ... 60 °C   |
| Media temperature                                     | -10 °C ... 60 °C   |

| <b>Feature</b>               | <b>Value</b>                              |
|------------------------------|---|
| Pilot medium                 | Compressed air to ISO 8573-1:2010 [7:4:4] |
| Ambient temperature          | -5 °C ... 40 °C                           |
| Product weight               | 300 g                                     |
| Electrical connection        | Via F coil, to be ordered separately      |
| Type of mounting             | On PR rail<br>With through-hole           |
| Pilot exhaust port 84        | M5  |
| Pilot air port 14            | G1/8                                      |
| Pneumatic connection, port 1 | G1/4                                      |
| Pneumatic connection, port 2 | G1/4                                      |
| Pneumatic connection, port 3 | G1/4                                      |
| Pneumatic connection, port 4 | G1/4                                      |
| Pneumatic connection, port 5 | G1/4                                      |
| Note on materials            | RoHS compliant                            |
| Material seals               | NBR<br>TPE-U(PU)                          |
| Material housing             | Die-cast aluminium                        |