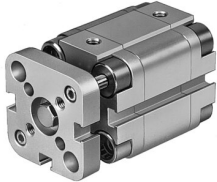


# Compact cylinder ADVUL-12-30-P-A

Part number: 156849

FESTO



 [General operating condition](#)

## Data sheet

| Feature  | Value  |
|--|--|
| Stroke   | 30 mm  |
| Piston diameter  | 12 mm  |
| Cushioning   | Elastic cushioning rings/plates at both ends   |
| Mounting position  | Any  |
| Design   | Piston<br>Piston rod   |
| Position detection   | Via proximity switch   |
| Symbol   | 00991737   |
| Variants   | Piston rod at one end  |
| Protection against torque/guide                              | Guide rod with yoke  |
| Operating pressure   | 0.15 MPa ... 1 MPa   |
| Operating pressure   | 1.5 bar ... 10 bar   |
| Mode of operation  | Double-acting  |
| Operating medium   | Compressed air to ISO 8573-1:2010 [7:4:4]  |
| Note on operating and pilot medium                           | Lubricated operation possible (in which case lubricated operation will always be required) |
| Corrosion resistance class CRC                               | 2 - Moderate corrosion stress  |
| LABS (PWIS) conformity                                       | VDMA24364-B1/B2-L  |
| Ambient temperature  | -20 °C ... 80 °C   |
| Impact energy in end positions                               | 0.07 J   |
| Theoretical force at 0.6 MPa (6 bar, 87 psi), return stroke  | 51 N   |
| Theoretical force at 0.6 MPa (6 bar, 87 psi), advance stroke | 68 N   |
| Moving mass for 0 mm stroke                                  | 21 g   |
| Additional moving mass per 10 mm stroke                      | 4 g  |
| Basic weight for 0 mm stroke                                 | 100 g  |
| Additional weight per 10 mm stroke                           | 14 g   |
| Type of mounting   | With through-hole<br>With accessories  |
| Pneumatic connection   | M5   |
| Material collar screws                                       | High-alloy stainless steel   |
| Material cover   | Wrought aluminium alloy  |
| Material dynamic seals                                       | NBR<br>TPE-U(PU)   |
| Material piston rod  | High-alloy stainless steel   |
| Material cylinder barrel                                     | Wrought aluminium alloy  |