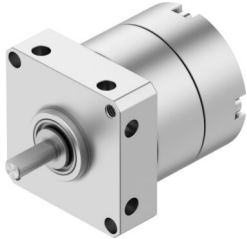


Semi-rotary drive DSM-T-6-180-P

Part number: 1565579

FESTO



 General operating condition

Data sheet

Feature	Value
Size	6
Cushioning angle	0.5 deg
Swivel angle	0 deg ... 180 deg
Permissible stop radius	≥10 mm
Cushioning	Elastic cushioning rings/plates at both ends
Mounting position	Any
Mode of operation	Double-acting
Design	Vane
Position detection	None
Symbol	00991265
Operating pressure	0.4 MPa ... 0.8 MPa
Operating pressure	4 bar ... 8 bar
Max. swivel frequency at 0.6 MPa (6 bar, 87 psi)	3 Hz
Repetition accuracy	1 deg
Operating medium	Compressed air to ISO 8573-1:2010 [7:4:4]
Note on operating and pilot medium	Lubricated operation possible (in which case lubricated operation will always be required)
Corrosion resistance class CRC	0 - No corrosion stress
LABS (PWIS) conformity	VDMA24364-B2-L
Ambient temperature	0 °C ... 60 °C
Max. stop force	15 N
Max. axial force	10 N
Max. radial force	15 N
Theoretical torque at 0.6 MPa (6 bar, 87 psi)	0.3 Nm
Permissible mass moment of inertia	6.5E-4 kgm ²
Product weight	60 g
Type of mounting	With female thread
Pneumatic connection	M3
Note on materials	RoHS compliant
Material drive shaft	High-alloy stainless steel
Material seals	TPE-U(PU)
Material housing	anodised