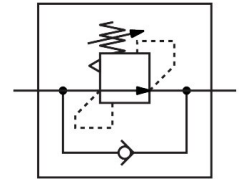


# Differential pressure regulator LRL-3/8-QS-8

Part number: 153517

FESTO



 General operating condition

## Data sheet

| Feature                            | Value  |
|------------------------------------|--|
| Controller function                | Differential pressure constant<br>With return flow function                                |
| Pneumatic connection, port 1       | R3/8   |
| Pneumatic connection, port 2       | QS-8   |
| Type of mounting                   | Screw-in   |
| Nominal flow rate open             | 463 l/min  |
| Pressure regulation range          | 2 bar ... 6 bar  |
| Inlet pressure 1                   | 0 MPa ... 0.9 MPa  |
| Inlet pressure 1                   | 0 bar ... 9 bar  |
| Inlet pressure 1                   | 0 psi ... 130.5 psi  |
| Ambient temperature                | 0 °C ... 60 °C   |
| Material housing                   | Reinforced PBT   |
| Operating medium                   | Compressed air to ISO 8573-1:2010 [7:-:-]  |
| Actuator lock                      | Counter-locking  |
| Mounting position                  | Any  |
| Design                             | Directly actuated piston regulator<br>With through compressed air supply                   |
| Symbol                             | 00991535   |
| Nominal flow rate closed           | 393 l/min  |
| Note on operating and pilot medium | Lubricated operation possible (in which case lubricated operation will always be required) |
| LABS (PWIS) conformity             | VDMA24364-B1/B2-L  |
| Product weight                     | 70 g   |
| Material screwed plug              | Nickel-plated brass  |
| Note on materials                  | RoHS compliant   |
| Material thread seal               | PTFE   |