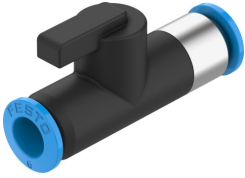


Ball valve QH-QS-4

Part number: 153483

FESTO



[PDF](#) General operating condition

Data sheet

Feature	Value
Valve function	2/2-way, double solenoid
Pneumatic connection, port 1	QS-4
Pneumatic connection, port 2	QS-4
Type of actuation	Manual
Type of mounting	Inline installation
Standard nominal flow rate (standardised to DIN 1343)	148 l/min
Nominal size	2.5 mm
Operating pressure	-0.1 MPa ... 1 MPa
Operating pressure	-1 bar ... 10 bar
Ambient temperature	0 °C ... 60 °C
Material housing	PBTP
Operating medium	Compressed air to ISO 8573-1:2010 [7:-:-]
Sealing principle	Soft
Design	Ball valve
Symbol	00991458
Note on operating and pilot medium	Lubricated operation possible (in which case lubricated operation will always be required)
LABS (PWIS) conformity	VDMA24364-B1/B2-L
Product weight	12 g
Note on materials	RoHS compliant