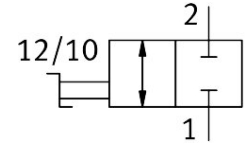


Shut-off valve HE-2-QS-8

Part number: 153468

FESTO



[PDF](#) General operating condition

Data sheet

Feature	Value
Valve function	2/2-way, double solenoid
Pneumatic connection, port 1	QS-8
Pneumatic connection, port 2	QS-8
Type of actuation	Manual
Type of mounting	Inline installation
Standard nominal flow rate (standardised to DIN 1343)	415.8 l/min
Nominal size	3.5 mm
Operating pressure	-0.095 MPa ... 1 MPa
Operating pressure	-0.95 bar ... 10 bar
Ambient temperature	0 °C ... 60 °C
Material housing	Reinforced PBT
Operating medium	Compressed air to ISO 8573-1:2010 [7:-:-]
Sealing principle	Soft
Mounting position	Any
Design	Piston gate valve
Type of piloting	Direct
Flow direction	Reversible
Symbol	00997328
Note on operating and pilot medium	Lubricated operation possible (in which case lubricated operation will always be required)
Corrosion resistance class CRC	2 - Moderate corrosion stress
LABS (PWIS) conformity	VDMA24364-B1/B2-L
Cleanroom suitability, measured according to ISO 14644-14	Class 4 according to ISO 14644-1
Media temperature	0 °C ... 60 °C
Product weight	26 g
Note on materials	RoHS compliant
Material seals	NBR