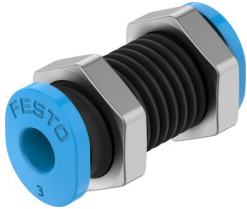


# Push-in bulkhead connector QSMS-3

Part number: 153375

FESTO



 General operating condition

## Data sheet

| Feature                                       | Value                                     |
|---|---|
| Size  | Mini                                      |
| Nominal size                                  | 1.7 mm                                    |
| Tubing insertion depth                        | 9.5 mm                                    |
| Mounting position                             | Any                                       |
| Design  | Bulkhead                                  |
| Size of pack                                  | 10  |
| Design  | Push-pull principle                       |
| Operating pressure complete temperature range | -0.095 MPa ... 0.6 MPa                    |
| Operating pressure complete temperature range | -0.95 bar ... 6 bar                       |
| Operating pressure complete temperature range | -13.775 psi ... 87 psi                    |
| Temperature-dependent operating pressure      | -0.095 MPa ... 1.4 MPa                    |
| Temperature-dependent operating pressure      | -0.95 bar ... 14 bar                      |
| Temperature-dependent operating pressure      | -13.775 psi ... 203 psi                   |
| Operating medium                              | Compressed air to ISO 8573-1:2010 [7:-:-] |
| Note on operating and pilot medium            | Lubricated operation possible             |
| Corrosion resistance class CRC                | 1 - Low corrosion stress                  |
| LABS (PWIS) conformity                        | VDMA24364-B1/B2-L                         |
| Ambient temperature                           | -10 °C ... 80 °C                          |
| Product weight                                | 3 g                                       |
| Pneumatic connection, port 1                  | For tubing outside diameter of 3 mm       |
| Pneumatic connection, port 2                  | For tubing outer diameter of 3 mm         |
| Colour of release ring                        | Blue                                      |
| Note on materials                             | RoHS compliant                            |
| Material housing                              | Anodised aluminium                        |
| Material release ring                         | POM                                       |
| Material nut                                  | Nickel-plated brass                       |
| Material tubing seal                          | NBR                                       |
| Material tubing clamp component               | High-alloy stainless steel                |