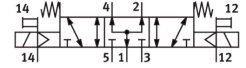


# Solenoid valve MFH-5/3B-D-3-S-C

Part number: 151036

FESTO



 [General operating condition](#)

## Data sheet

| Feature   | Value   |
|---|---|
| Valve function  | 5/3-way, pressurised                          |
| Type of actuation                                     | Electrical                                    |
| Construction width                                    | 65 mm   |
| Standard nominal flow rate (standardised to DIN 1343) | 4000 l/min                                    |
| pneumatic working port                                | Sub-base size 3 to ISO 5599-1<br>G1/2         |
| Operating voltage                                     | Via solenoid coil, must be ordered separately |
| Operating pressure                                    | -0.09 MPa ... 1.6 MPa                         |
| Operating pressure                                    | -0.9 bar ... 16 bar                           |
| Design  | Piston gate valve                             |
| Type of reset   | Mechanical spring                             |
| Approval  | c UL us - Recognised (Oil)                    |
| Maritime classification                               | See certificate                               |
| Certificate issuing authority                         | DNV-TAA000032X<br>UL MH19482                  |
| Degree of protection                                  | IP65  |
| Nominal size  | 14.5 mm                                       |
| Grid dimension  | 71 mm   |
| Exhaust-air function                                  | Can be throttled                              |
| Sealing principle                                     | Soft  |
| Mounting position                                     | Any   |
| Conforms to standard                                  | ISO 5599-1                                    |
| Manual override                                       | Detenting via accessory<br>Non-detenting      |
| ISO code  | 369   |
| Type of piloting                                      | Piloted                                       |
| Pilot air supply                                      | External                                      |
| Flow direction  | Reversible                                    |
| Symbol  | 00991079                                      |
| lap   | Overlap                                       |
| Pilot pressure  | 0.3 MPa ... 1 MPa                             |
| Pilot pressure  | 3 bar ... 10 bar                              |
| Suitability for vacuum                                | Yes   |
| Switching time off                                    | 75 ms   |
| Switching time on                                     | 36 ms   |
| Max. positive test pulse with 0 signal                | 2200 µs                                       |

| Feature                                | Value  |
|--|--|
| Max. negative test pulse with 1 signal | 3700 µs  |
| Operating medium                       | Compressed air to ISO 8573-1:2010 [7:4:4]  |
| Note on operating and pilot medium     | Lubricated operation possible (in which case lubricated operation will always be required)                                 |
| Vibration resistance                   | Transport application test with severity level 1 to FN 942017-4 and EN 60068-2-6   |
| Shock resistance                       | Shock test with severity level 2 to FN 942017-5 and EN 60068-2-27  |
| LABS (PWIS) conformity                 | VDMA24364-B1/B2-L  |
| Media temperature                      | -10 °C ... 60 °C   |
| Sound pressure level                   | 85 dB(A)   |
| Pilot medium                           | Compressed air to ISO 8573-1:2010 [7:4:4]  |
| Ambient temperature                    | -5 °C ... 40 °C  |
| Product weight                         | 1040 g   |
| Electrical connection                  | 3-pin<br>Type A, with VACF-A coil<br>Type B industry (11 mm), with MSF coil<br>Via solenoid coil, to be ordered separately |
| Type of mounting                       | On sub-base<br>Via through-hole and screw  |
| Pilot exhaust port 82                  | M5   |
| Pilot exhaust port 84                  | M5   |
| Pilot air port 12                      | Sub-base size 3 to ISO 5599-1  |
| Pilot air port 14                      | Sub-base size 3 to ISO 5599-1  |
| Pneumatic connection, port 1           | Sub-base size 3 to ISO 5599-1  |
| Pneumatic connection, port 2           | Sub-base size 3 to ISO 5599-1  |
| Pneumatic connection, port 3           | Sub-base size 3 to ISO 5599-1  |
| Pneumatic connection, port 4           | Sub-base size 3 to ISO 5599-1  |
| Pneumatic connection, port 5           | Sub-base size 3 to ISO 5599-1  |
| Note on materials                      | RoHS compliant   |
| Material seals                         | HNBR<br>NBR  |
| Material housing                       | Die-cast aluminium   |