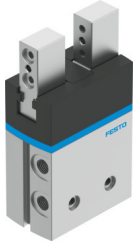


Parallel gripper DHPS-25-A

Part number: 1254049

FESTO



[PDF](#) General operating condition

Data sheet

| Feature | Value |
|--|---|
| Size | 25 |
| Stroke per gripper jaws | 7.5 mm |
| Max. replacement accuracy | ≤0.2 mm |
| Max. angular gripper jaw backlash ax, ay | <0.5 deg |
| Max. gripper jaw backlash Sz | <0.02 mm |
| Rotationally symmetrical | ≤0.2 mm |
| Repetition accuracy, gripper | <0.02 mm |
| Number of gripper jaws | 2 |
| Drive system | Pneumatic |
| Mounting position | Any |
| Mode of operation | Double-acting |
| Gripper function | Parallel |
| Gripper force back-up | None |
| Design | Lever Force pilot operated motion sequence |
| Guide | Plain-bearing guide |
| Position detection | Via proximity switch |
| Symbol | 00991894 |
| Operating pressure | 0.2 MPa ... 0.8 MPa |
| Operating pressure | 2 bar ... 8 bar |
| Operating pressure | 29 psi ... 116 psi |
| Max. operating frequency of gripper | 2 Hz |
| Min. opening time at 0.6 MPa (6 bar, 87 psi) | 48 ms |
| Min. closing time at 0.6 MPa (6 bar, 87 psi) | 63 ms |
| Max. mass per external gripper finger | 350 g |
| Operating medium | Compressed air to ISO 8573-1:2010 [7:4:4] |
| Note on operating and pilot medium | Lubricated operation possible (in which case lubricated operation will always be required) |
| Corrosion resistance class CRC | 1 - Low corrosion stress |
| LABS (PWIS) conformity | VDMA24364-B2-L |
| Suitability for the production of Li-ion batteries | Metals with more than 5% by mass of copper are excluded from use. Exceptions are printed circuit boards, cables, electrical connectors and coils. |
| Ambient temperature | 5 °C ... 60 °C |
| Total gripping force, opening, 0.6MPa (6bar, 87 psi) | 500 N |
| Total gripping force, closing, 0.6MPa (6bar, 87 psi) | 450 N |

| Feature | Value |
|---|--|
| Gripper force per gripper jaw, opening, 0.6 MPa (6 bar, 87 psi) | 249 N |
| Gripper force per gripper jaw, closing, 0.6 MPa (6 bar, 87 psi) | 228 N |
| Mass moment of inertia | 3.831 kgcm ² |
| Max. force on gripper jaw Fz static | 350 N |
| Max. torque at gripper Mx static | 30 Nm |
| Max. torque at gripper My static | 30 Nm |
| Max. torque at gripper Mz static | 30 Nm |
| Lubrication interval for guide components | 10 MioCyc |
| Product weight | 700 g |
| Type of mounting | Either: Via female thread and centring sleeve Via through-hole and centring sleeve |
| Pneumatic connection | G1/8 |
| Note on materials | RoHS compliant |
| Material cover cap | Process automation |
| Material housing | Hard anodised wrought aluminium alloy |
| Material gripper jaws | High-alloy stainless steel |