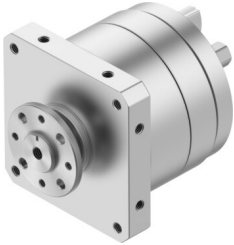


# Semi-rotary drive DSM-T-12-270-FW-A-B

Part number: 1145128

FESTO



 General operating condition

## Data sheet

| Feature  | Value  |
|--|--|
| Size   | 12   |
| Swivel angle                                     | 0 deg ... 270 deg  |
| Permissible stop radius                          | ≥15 mm   |
| Mounting position                                | Any  |
| Mode of operation                                | Double-acting  |
| Design   | Vane   |
| Position detection                               | None   |
| Symbol   | 00991265   |
| Operating pressure                               | 0.25 MPa ... 1 MPa   |
| Operating pressure                               | 2.5 bar ... 10 bar   |
| Max. swivel frequency at 0.6 MPa (6 bar, 87 psi) | 2 Hz   |
| Operating medium                                 | Compressed air to ISO 8573-1:2010 [7:-:-]  |
| Note on operating and pilot medium               | Lubricated operation possible (in which case lubricated operation will always be required) |
| Corrosion resistance class CRC                   | 0 - No corrosion stress  |
| LABS (PWIS) conformity                           | VDMA24364-B2-L   |
| Ambient temperature                              | -10 °C ... 60 °C   |
| Max. stop force                                  | 90 N   |
| Max. axial force                                 | 18 N   |
| Max. radial force                                | 45 N   |
| Theoretical torque at 0.6 MPa (6 bar, 87 psi)    | 2.5 Nm   |
| Product weight                                   | 350 g  |
| Type of mounting                                 | With female thread   |
| Pneumatic connection                             | M5   |
| Note on materials                                | RoHS compliant   |
| Material drive shaft                             | Steel<br>nickel-plated   |
| Material seals                                   | TPE-U(PU)  |
| Material housing                                 | Anodised aluminium   |