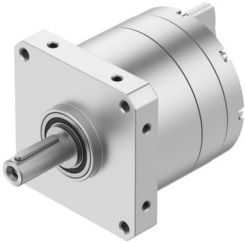


# Semi-rotary drive DSM-T-63-270-A-B

Part number: 1145127

FESTO



 General operating condition

## Data sheet

Feature	Value
Size	63
Swivel angle	0 deg ... 270 deg
Permissible stop radius	≥50 mm
Mounting position	Any
Mode of operation	Double-acting
Design	Vane
Position detection	None
Symbol	00991265
Operating pressure	0.2 MPa ... 1 MPa
Operating pressure	2 bar ... 10 bar
Max. swivel frequency at 0.6 MPa (6 bar, 87 psi)	1.6 Hz
Operating medium	Compressed air to ISO 8573-1:2010 [7:-:-]
Note on operating and pilot medium	Lubricated operation possible (in which case lubricated operation will always be required)
Corrosion resistance class CRC	0 - No corrosion stress
LABS (PWIS) conformity	VDMA24364-B2-L
Ambient temperature	-10 °C ... 60 °C
Max. stop force	1050 N
Max. axial force	500 N
Max. radial force	500 N
Theoretical torque at 0.6 MPa (6 bar, 87 psi)	80 Nm
Product weight	6050 g
Type of mounting	With female thread
Pneumatic connection	G1/4
Note on materials	RoHS compliant
Material drive shaft	Steel nickel-plated
Material seals	TPE-U(PU)
Material housing	Anodised aluminium