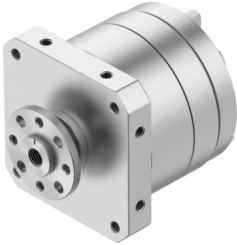


Semi-rotary drive DSM-T-25-270-P-FW-A-B

Part number: 1145099

FESTO



 General operating condition

Data sheet

Feature	Value
Size	25
Cushioning angle	1.2 deg
Rotation angle adjustment range	0 deg ... 270 deg
Swivel angle	0 deg ... 270 deg
Permissible stop radius	≥21 mm
Cushioning	Elastic cushioning rings/plates at both ends
Mounting position	Any
Fine adjustment	-6 deg
Mode of operation	Double-acting
Design	Vane
Position detection	Via proximity switch
Symbol	00991265
Operating pressure	0.2 MPa ... 1 MPa
Operating pressure	2 bar ... 10 bar
Max. swivel frequency at 0.6 MPa (6 bar, 87 psi)	2 Hz
Repetition accuracy	1 deg
Operating medium	Compressed air to ISO 8573-1:2010 [7:-:-]
Note on operating and pilot medium	Lubricated operation possible (in which case lubricated operation will always be required)
Corrosion resistance class CRC	0 - No corrosion stress
LABS (PWIS) conformity	VDMA24364-B2-L
Ambient temperature	-10 °C ... 60 °C
Max. stop force	320 N
Max. axial force	50 N
Max. radial force	120 N
Theoretical torque at 0.6 MPa (6 bar, 87 psi)	10 Nm
Permissible mass moment of inertia	0.015 kgm ²
Product weight	995 g
Type of mounting	With female thread
Pneumatic connection	M5
Note on materials	RoHS compliant
Material drive shaft	Steel nickel-plated
Material seals	TPE-U(PU)
Material housing	Anodised aluminium